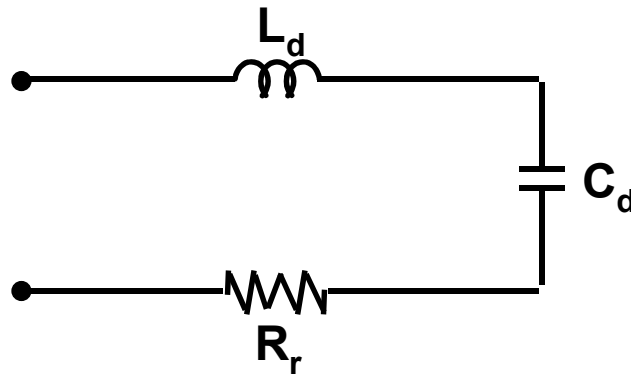


## EQUIVALENT CIRCUIT OF A SHORT DIPOLE

Half length =  $l$

radius =  $a$



$$R_r = 20 (\beta l)^2$$

$$C_d = \frac{l}{0.036 \left[ \ln \frac{l}{a} \right]} \text{ pF} \quad L_d = \frac{1.6 l}{\pi^2} \left[ \ln \frac{l}{a} \right] \mu\text{H}$$

$$\beta = 2\pi / \lambda$$